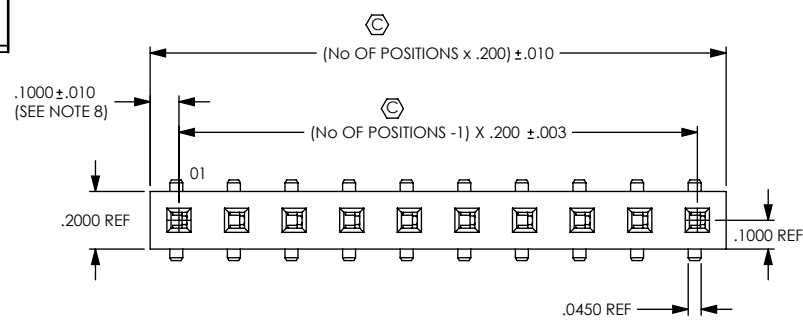


DO NOT SCALE FROM THIS PRINT



HPF-XX-XX-XX-S-XX-XX

No OF POSITIONS

-02 THRU -20 (PER ROW)

LEAD STYLE

-01: THROUGH HOLE (SEE FIG 4) (USE C-130-03-X)

-02: SURFACE MOUNT (USE C-130-04-X)

PLATING SPECIFICATION

-T: TIN (USE C-130-XX-T)

-H: HEAVY GOLD (USE C-130-XX-H)

-TM: MATTE TIN (USE C-130-XX-T)

ROW SPECIFICATION

-S: SINGLE (USE HPFR-XX-S-X)

POLARIZATION

# -02 THRU -06, -08, -10 (SEE TABLE 2 FOR AVAILABLE COMBINATIONS) (SEE SHT 3, IN-PROCESS 1 POLARIZED FILL)

OPTION

-LC: LOCKING CLIP (USE LC-05-TM) (SEE SHT 2, FIG 2) (-02 LEAD STYLE ONLY, SEE NOTE 9)

\*-A: ALIGNMENT PIN (-02 LEAD STYLE ONLY) (SEE SHT 2, FIG 2)

-K: POLYIMIDE FILM PAD (-02 LEAD STYLE ONLY, AVAILABLE ON -01 LEAD STYLE FOR EXISTING CUSTOMERS ONLY) (SEE SHT 2, FIG 3) (USE K-DOT-.256-.375-.005)

-TR: TAPE & REEL (-02 LEAD STYLE ONLY) (14 POS MAX)

# = INTERNAL USE ONLY NOT FOR SALE

\* = NOT ENGINEERING APPROVED

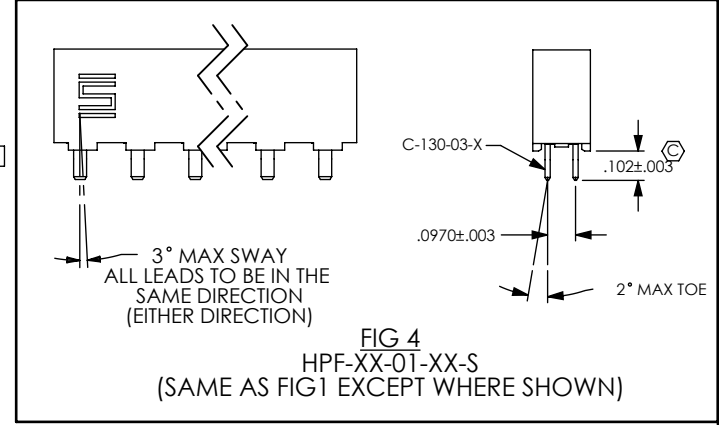
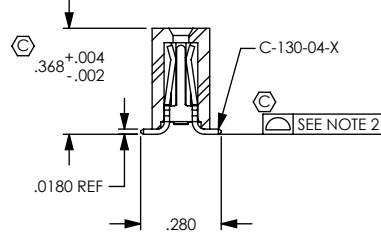
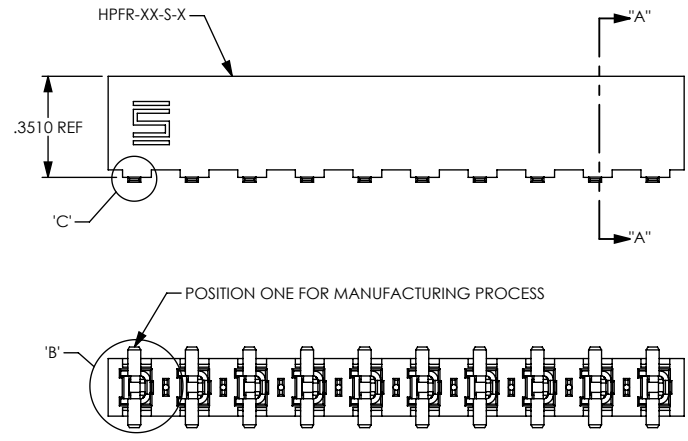


FIG 4  
HPF-XX-01-XX-S  
(SAME AS FIG 1 EXCEPT WHERE SHOWN)

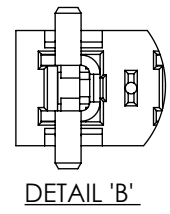
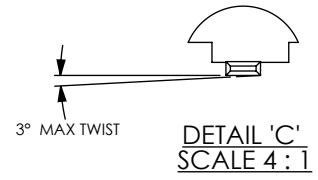


FIG 1  
HPF-XX-02-XX-S-XX

NOTES:

1. Ⓢ REPRESENTS A CRITICAL DIMENSION.
2. COPLANARITY TO BE WITHIN :  
2-10 POS: .006  
11-20 POS: .008
3. BURR ALLOWANCE: .0015 MAX.
4. MAXIMUM CUT FLASH: .020.
5. MINIMUM PUSHOUT FORCE: 1.0 LB.
6. ALL PARTS TO BE TUBE PACKAGED.
7. OPEN PART OF CONTACT FILLED TOWARDS #1 PIN INDICATOR.
8. MINIMUM WALL THICKNESS TO BE .010.
9. DUE TO THE HIGH AMOUNT OF INSERTION FORCE NEEDED, THE -LC OPTION IS NOT COMPATIBLE WITH AUTO PLACEMENT, SAMTEC RECOMMENDS MANUAL PLACEMENT FOR ALL ASSEMBLIES WITH THE -LC OPTION.
10. NOTE DELETED.

LEAD STYLE	PLATING	
	-T	-H
01	02, 03, 04, 06, 08	N/A
02	02, 03, 04, 05	04

FINISHED GOODS	SUBASSEMBLY
HPF-02-01-T-S	HPF-20-01-T-S-02
HPF-02-02-T-S-XX	HPF-20-02-T-S-02
HPF-03-01-T-S	HPF-20-01-T-S-03
HPF-03-02-T-S-XX	HPF-20-02-T-S-03
HPF-04-01-T-S	HPF-20-01-T-S-04
HPF-04-02-T-S-XX	HPF-20-02-T-S-04
HPF-04-02-H-S-XX	HPF-20-02-H-S-04
HPF-05-02-T-S-XX	HPF-20-02-T-S-05
HPF-06-01-T-S	HPF-20-01-T-S-06
HPF-08-01-T-S	HPF-20-01-T-S-08
HPF-10-01-T-S	HPF-20-01-T-S-10
HPF-08-02-T-S	HPF-20-02-T-S-08
ALL REMAINING CONFIGURATIONS	HPF-20-01-T-S

UNLESS OTHERWISE SPECIFIED, DIMENSIONS ARE IN INCHES. TOLERANCES ARE:  
DECIMALS ANGLES  
.XX: ±.01 2°  
.XXX: ±.005  
.XXXX: ±.0020

PROPRIETARY NOTE  
THIS DOCUMENT CONTAINS CONFIDENTIAL AND PROPRIETARY INFORMATION AND ALL DESIGN, MANUFACTURING, REPRODUCTION, USE, PATENT RIGHTS AND SALES RIGHTS ARE EXPRESSLY RESERVED BY SAMTEC, INC. THIS DOCUMENT SHALL NOT BE DISCLOSED, IN WHOLE OR PART, TO ANY UNAUTHORIZED PERSON OR ENTITY NOR REPRODUCED, TRANSFERRED OR INCORPORATED IN ANY OTHER PROJECT IN ANY MANNER WITHOUT THE EXPRESS WRITTEN CONSENT OF SAMTEC, INC.



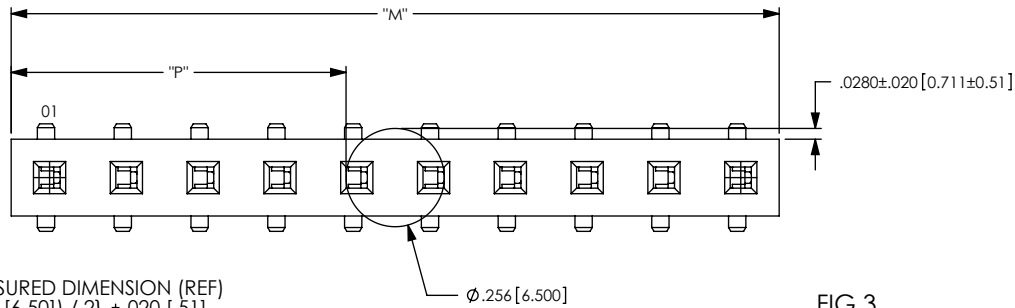
520 PARK EAST BLVD, NEW ALBANY, IN 47150  
PHONE: 812-944-6733 FAX: 812-948-5047  
e-Mail: info@SAMTEC.com code: 53322

MATERIAL: DO NOT SCALE DRAWING SHEET SCALE: 1.5:1  
MATERIAL: VECTRA E130i  
COLOR: BLACK  
CONTACT: BeCu, 174HT

DESCRIPTION: .200 HI POWER SOCKET ASSEMBLY

DWG. NO. HPF-XX-XX-XX-S-XX-XX

BY: DEAN P 01/04/1999 SHEET 1 OF 3



NOTE: "M" = USED MEASURED DIMENSION (REF)  
 "P" =  $\{("M" - .256 [6.500]) / 2\} \pm .020 [.51]$

FIG 3

-K: POLYIMIDE FILM PAD OPTION  
 (SHOWN: HPF-10-02-X-S-K)

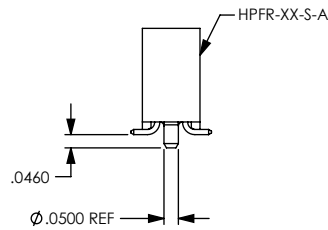
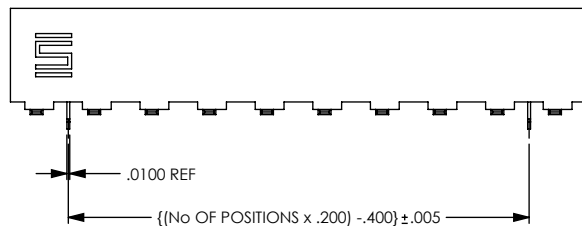
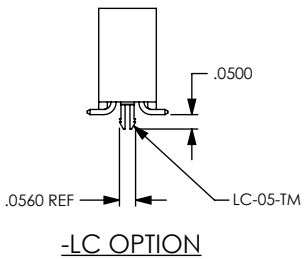
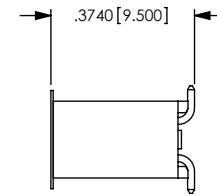
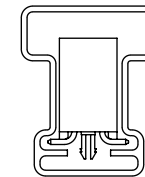
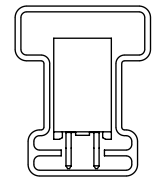


FIG 2

-LC & -A OPTIONS  
 (-LC & -A OPTION ONLY AVAILABLE ON -02 LEAD STYLE)  
 (SAME AS FIG 1 EXCEPT WHERE SHOWN)



SURFACE MOUNT



THROUGH HOLE

TUBE: PT-1-24-02-44  
 PLUG: TP-07

SEE NOTES 6 & 7 FOR ADDITIONAL PACKAGING INSTRUCTIONS

PACKAGING VIEW

PROPRIETARY NOTE

THIS DOCUMENT CONTAINS CONFIDENTIAL AND PROPRIETARY INFORMATION AND ALL DESIGN, MANUFACTURING, REPRODUCTION, USE, PATENT RIGHTS AND SALES RIGHTS ARE EXPRESSLY RESERVED BY SAMTEC, INC. THIS DOCUMENT SHALL NOT BE DISCLOSED, IN WHOLE OR PART, TO ANY UNAUTHORIZED PERSON OR ENTITY NOR REPRODUCED, TRANSFERRED OR INCORPORATED IN ANY OTHER PROJECT IN ANY MANNER WITHOUT THE EXPRESS WRITTEN CONSENT OF SAMTEC, INC.

DO NOT SCALE DRAWING

SHEET SCALE: 2:1



520 PARK EAST BLVD, NEW ALBANY, IN 47150  
 PHONE: 812-944-6733 FAX: 812-948-5047  
 e-Mail: info@SAMTEC.com code: 55322

DESCRIPTION: .200 HI POWER SOCKET ASSEMBLY

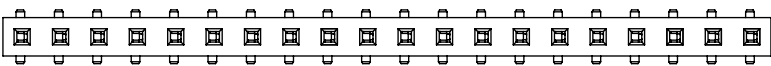
DWG. NO. HPF-XX-XX-XX-S-XX-XX

BY: DEAN P 01/04/1999 SHEET 2 OF 3

**POLARIZED OPTION**

■ = DENOTES EMPTY POSITION

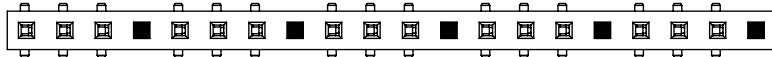
**STANDARD FILL**



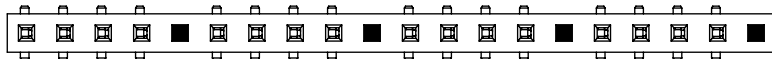
**-02 POLARIZATION**  
(7 FINISHED GOODS)  
HPF-20-02-XX-S-02 SHOWN



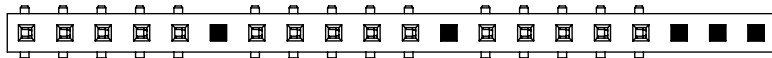
**-03 POLARIZATION**  
(5 FINISHED GOODS)  
HPF-20-02-XX-S-03 SHOWN



**-04 POLARIZATION**  
(4 FINISHED GOODS)  
HPF-20-02-XX-S-04 SHOWN



**-05 POLARIZATION**  
(3 FINISHED GOODS)  
HPF-20-02-XX-S-05 SHOWN



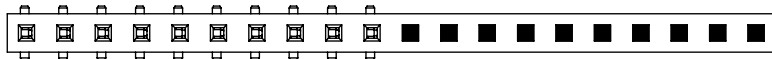
**-06 POLARIZATION**  
(3 FINISHED GOODS)  
HPF-20-02-XX-S-06 SHOWN



**-08 POLARIZATION**  
(2 FINISHED GOODS)  
HPF-20-02-XX-S-08 SHOWN



**-10 POLARIZATION**  
(1 FINISHED GOODS)  
HPF-20-02-XX-S-10 SHOWN



**PROPRIETARY NOTE**  
\* THIS DOCUMENT CONTAINS CONFIDENTIAL AND PROPRIETARY INFORMATION AND ALL DESIGN, MANUFACTURING, REPRODUCTION, USE, PATENT RIGHTS AND SALES RIGHTS ARE EXPRESSLY RESERVED BY SAMTEC, INC. THIS DOCUMENT SHALL NOT BE DISCLOSED, IN WHOLE OR PART, TO ANY UNAUTHORIZED PERSON OR ENTITY NOR REPRODUCED, TRANSFERRED OR INCORPORATED IN ANY OTHER PROJECT IN ANY MANNER WITHOUT THE EXPRESS WRITTEN CONSENT OF SAMTEC, INC.



520 PARK EAST BLVD., NEW ALBANY, IN 47150  
PHONE: 812-944-6733 FAX: 812-948-5047  
e-Mail: info@SAMTEC.com code: 55322

SHEET SCALE: 1.5:1

DESCRIPTION: .200 HI POWER SOCKET ASSEMBLY

DWG. NO. HPF-XX-XX-XX-S-XX-XX

BY: DEAN P 01/04/1999 SHEET 3 OF 3