



Application Note

AN_132

Re-Assigning COM Port Numbers Using the Windows Registry

Version 1.1

Issue Date: 2016-04-27

This application note illustrates how to re-assign automatically assigned FTDI COM port numbers using the Windows OS registry.

Future Technology Devices International Limited (FTDI)

Unit 1,2 Seaward Place, Glasgow G41 1HH, United Kingdom
Tel.: +44 (0) 141 429 2777 Fax: + 44 (0) 141 429 2758
E-Mail (Support): support1@ftdichip.com Web: <http://www.ftdichip.com>
Copyright © Future Technology Devices International Limited

Table of Contents

1 Introduction	2
2 System COM Port Assignment.....	3
3 How to Re-Assign COM port numbers by registry modification	4
3.1 Open the OS registry	4
3.1.1 Windows XP	4
3.1.2 Windows 7 Onwards	4
3.2 Re-assign the COM Name Arbiter in ComDB.....	7
3.3 Import the modified FTDIUSB registry file	9
4 Contact Information.....	13
Appendix A - References.....	14
Acronyms and Abbreviations	14
Appendix B – List of Tables & Figures.....	15
List of Figures	15
Appendix C - Revision History	16

1 Introduction

This application note describes how to re-assign the COM port numbers allocated during installation on Windows operating systems by modifying registry entries. The application note provides a walkthrough of manually editing the registry, but the same technique could be employed by a program.

WARNING: Any edits made to a PC registry may be harmful to the operation of the PC. As such we recommend you create a backup of the registry before making any changes. FTDI cannot be held responsible for any damage done as a result of incorrect manual editing of the registry.

2 System COM Port Assignment

COM ports are assigned to FTDI devices during installation, based on the next free port as indicated by the PC registry. In most systems this would imply starting at COM3 as COM 1 and COM2 are usually reserved for legacy COM ports. If COM3 is already in use, the next available COM port index will be claimed. In the case of multiple interface chips, such as the FT2232H or FT4232H, a co-installer is used to claim consecutive COM ports for the interfaces of the device. If three FTDI FT4232H devices are connected to a PC, then 12 COM ports will appear to the operating system. In the example below, the PC has assigned these COM ports with com port numbers from COM3 to COM14.

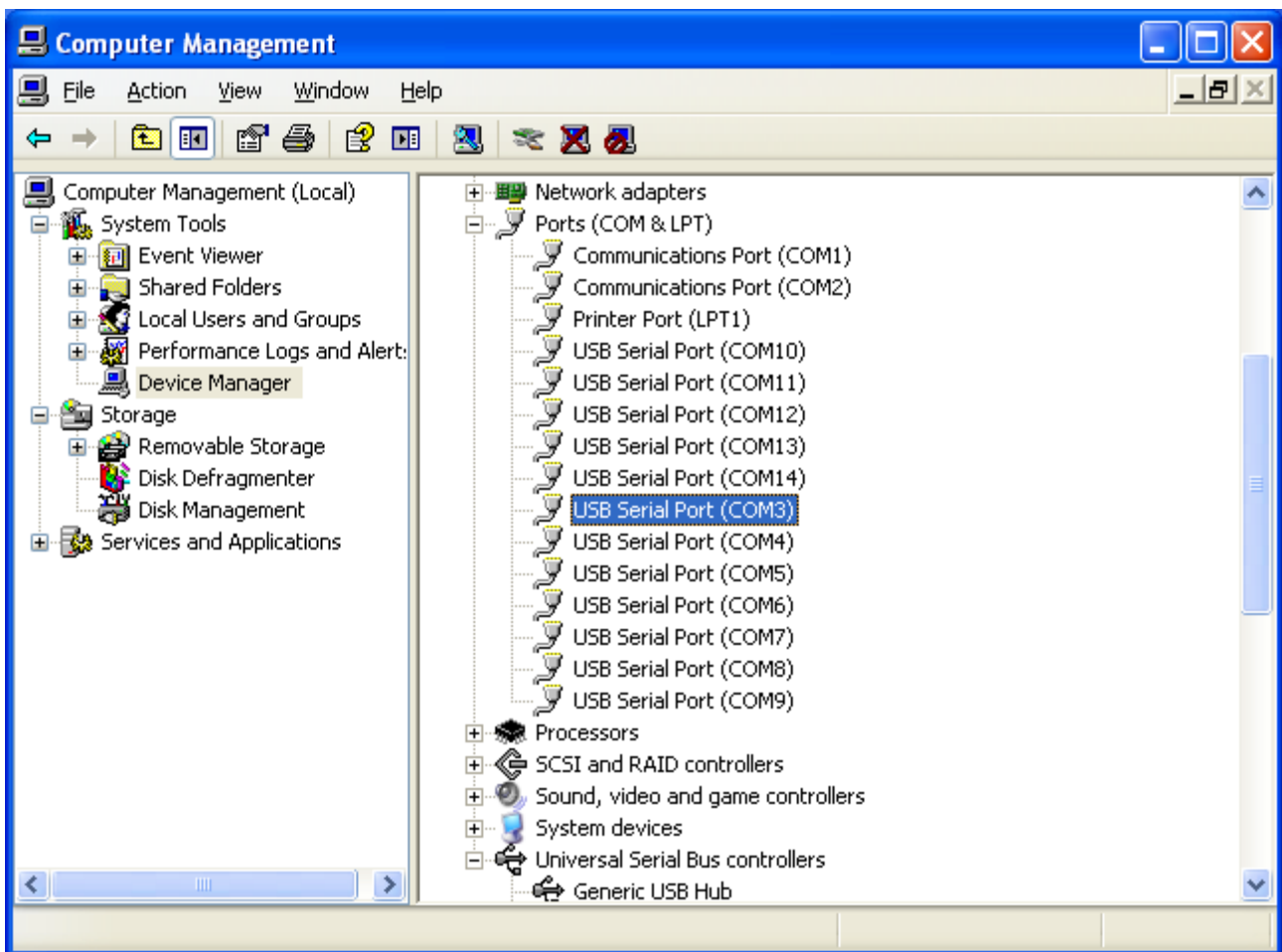


Figure 1 - System COM Port Assignment

3 How to Re-Assign COM port numbers by registry modification

In the example above, the operating system automatically assigns the 12 COM ports from COM3 to COM14. If it is required to re-assign the COM port numbers without setting each port individually, then the FTDIUSB file in the registry can be used to do this. Follow the procedures below to re-assign COM Port numbers using the operating system registry.

3.1 Open the OS registry

3.1.1 Windows XP

To open the OS registry, select the "Start" button and press the "Run". In the pop-up box that appears, type "regedt32" and press enter to access the registry. This is shown in the figure below.

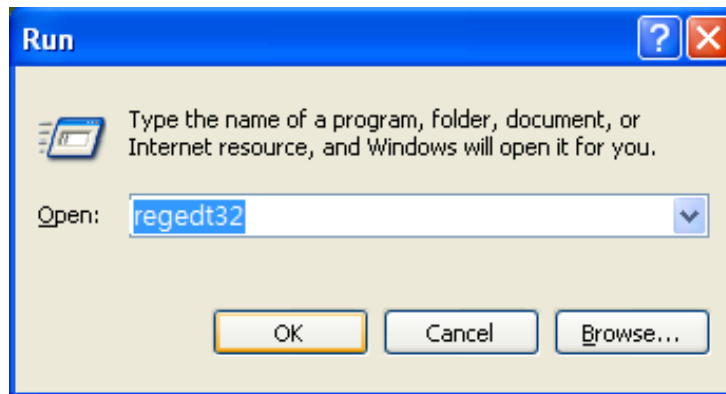


Figure 2 - Accessing the Registry (Windows XP)

3.1.2 Windows 7 Onwards

To open the OS registry, select the "Start" button and in the search box type "regedt32". This should display the registry executable as shown below in the image to the left. Right click on this to open the context menu where you should select the "Run as administrator" option, as shown in the image to the right. If you do not select "Run as administrator" the remaining steps will not work.

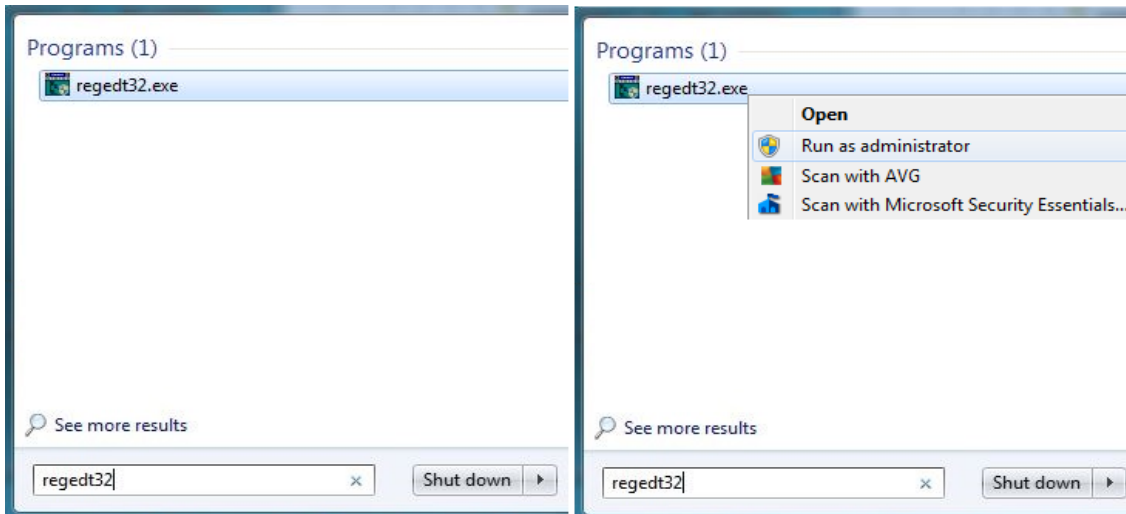


Figure 3 - Accessing the Registry (Windows 7)

Within the registry, navigate to the following area to access all FTDI devices:
HKEY_LOCAL_MACHINE\SYSTEM\CurrentControlSet\Enum\FTDIBUS.

Select FTDIBUS and then under the "file" pull-down menu select "export" – as shown in the figure below. This will export the FTDIBUS registry key, sub-keys and values to a file.

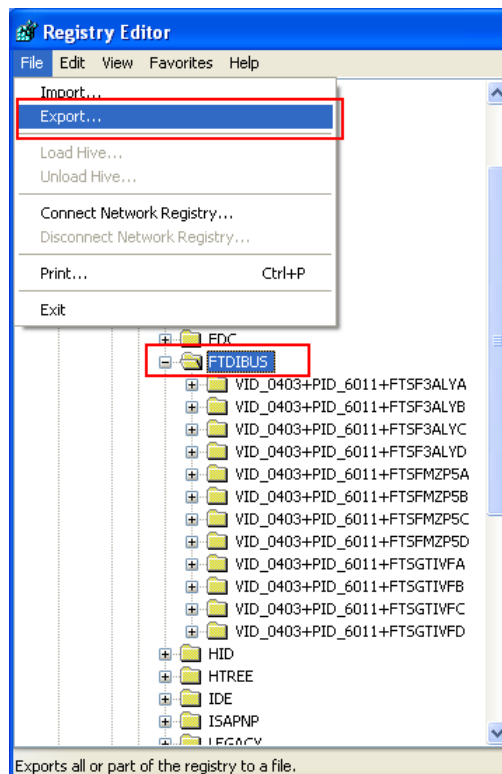


Figure 4 - Export the FTDIBUS Registry to a File

Right click on this saved file and select "Edit" to open the file, as shown in the figure below.

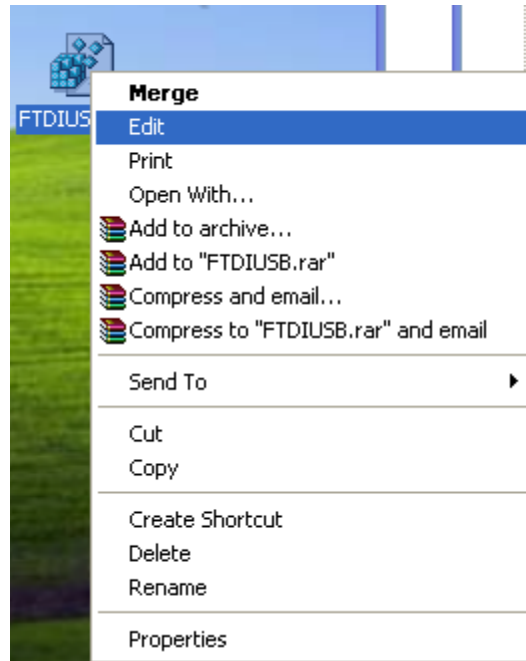


Figure 5 - Edit the Registry File

In the FTDIUSB.reg file, modify the "FriendlyName" and "PortName" in the file for each port which needs to re-assigned.

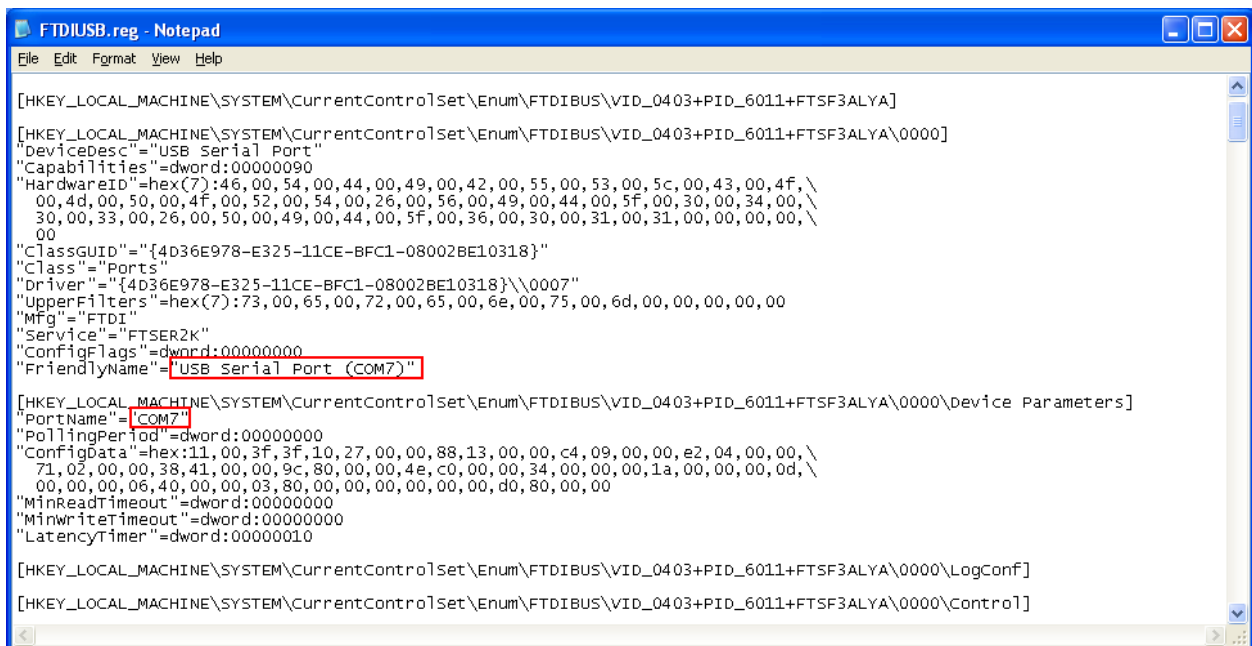


Figure 6 - Modifying the FTDIUSB.reg Registry File

For example to re-assign COM7 to COM17 modify the FTDIUSB.reg file as follows:

Replace FriendlyName from "USB Serial Port (COM7)" to "USB Serial Port (COM17)", and modify PortName from "COM7" to "COM17" at the same time. This will re-assign COM7 to COM17 after the registry file has been uploaded (illustrated later).

The same method can be used to modify each port.

Note: Care should be taken that the same COM port number is not repeated.

3.2 Re-assign the COM Name Arbiter in ComDB

If COM3 to COM14 are re-assigned to COM13 to COM24, then it is necessary to free up the unused com ports (COM3~COM12) and allocate the new additional ports COM15~COM24. To do this it is necessary to modify the ComDB database by using the following procedure.

Open the registry and navigate to the following area of the registry
HKEY_LOCAL_MACHINE\SYSTEM\CurrentControlSet\Control\COM Name Arbiter

Open the "ComDB" as shown in the figure below. The example shows that the original value of "ComDB" is as follows:

ComDB original value = FF 3F 00
00 00 00

The ComDB value is a bit mask of COM ports already allocated. This value is equivalent to COM3~COM14.

The first byte "FF" equates to the com ports COM8~COM1 and indicates that these COM ports are occupied. The second byte "3F" equates to the com ports COM14~COM9 and this indicates that these COM ports are occupied. (**Note that COM1 and COM2 are the COM port of motherboard**).

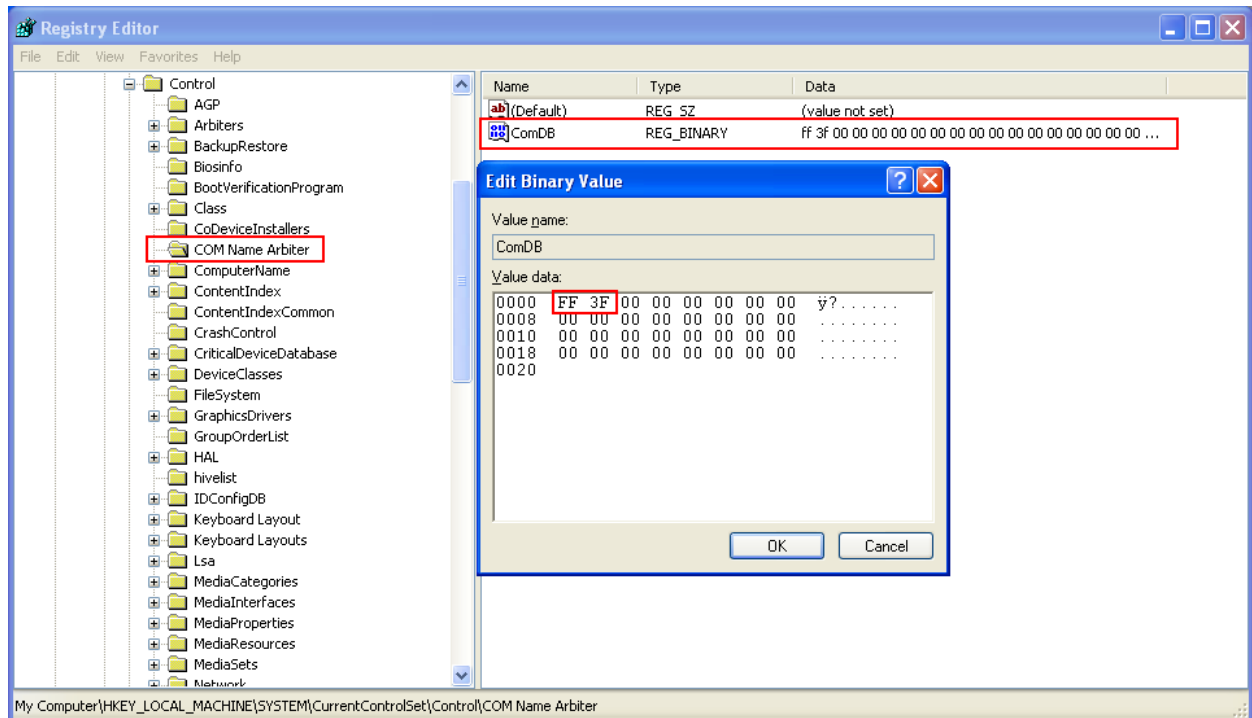


Figure 7 - Editing the ComDB Database

To allocate the COM port numbers COM13~COM24, it is necessary to modify the ComDB value as follows:

ComDB new value = 03 F0 FF 00

This is shown in the following diagram:

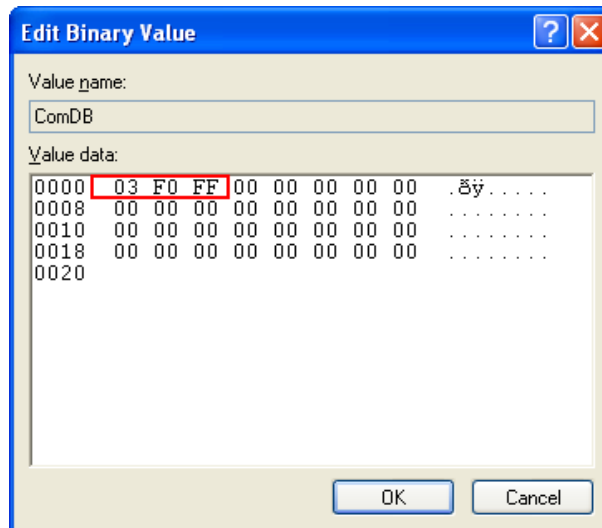


Figure 8 - Change the Value 3

The first byte "03" is used for COM2 and COM1 of motherboard. COM8~COM3 are not used.

The second byte "F0" is equates to COM12~COM9 that are not used and COM16~COM13 that are occupied.

The third byte "FF" equates to COM24~COM17 which are occupied.

Note: The first byte controls COM8~1, the second byte controls COM16~9, the third byte controls COM24~COM17 and so on. A value=0 means that the port is not used. A value=1 means that the port is occupied.

3.3 Import the modified FTDIUSB registry file

When the FTDIUSB registry file has been modified it is necessary to import the file back into the registry.

To be able to do this a user must have full access control rights to modify it in the registry.

To modify the permissions, right click on the FTDIUSB folder in the registry and select the Permissions to enable the permission for modification – as shown in the figure below -

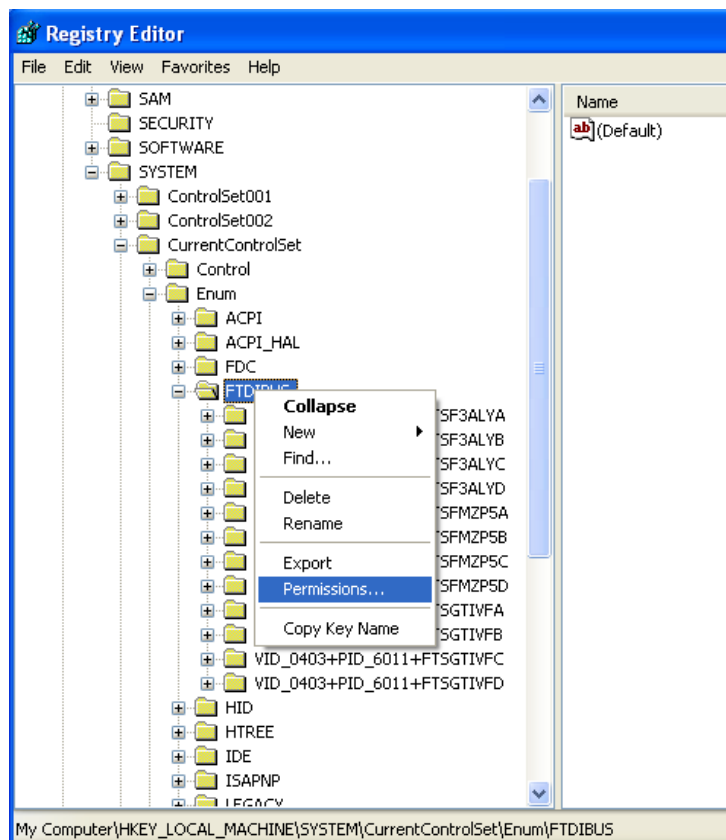


Figure 9 - Modifying Registry Permissions for FTDIUSB Folder

The following window will appear. Select "full control" then press OK.

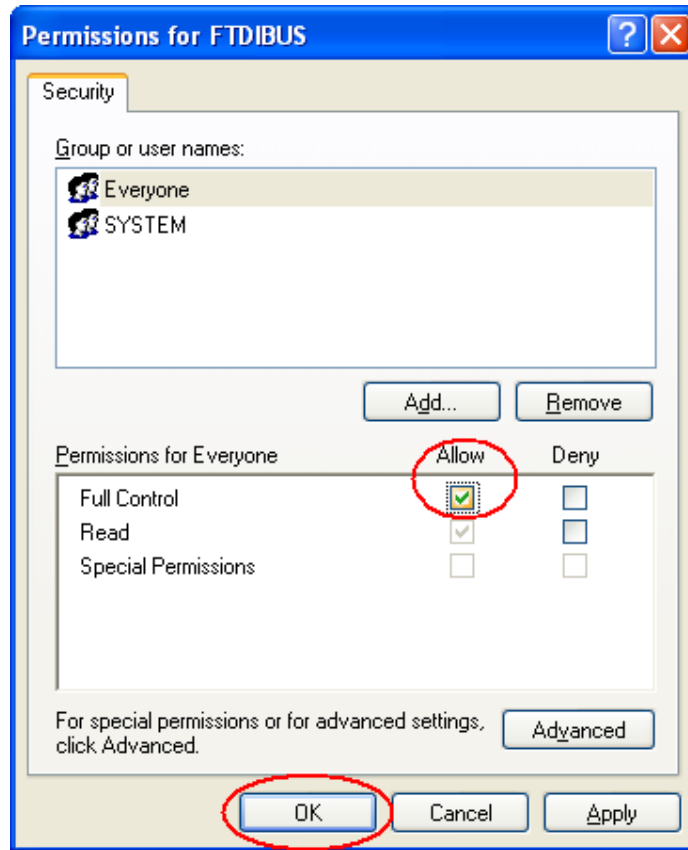


Figure 10 - Allow Full Control Access Rights to the FTDIUSB Registry

Note: You may encounter an "Access is denied" error as per the below diagram. If so follow the below steps.

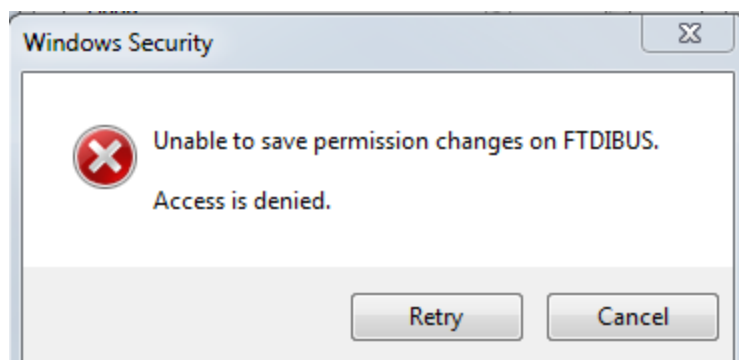


Figure 11 - "Access Denied" Message Window

Open the Permissions window for FTDIBUS again and click on the advanced button instead. In the "Advanced Security Settings" window click on the "Owner" tab. If the current owner is not you then change to you by highlighting your name in the "Change owner to:" window.

Click Apply > OK.

Repeat the steps at the beginning of section 3.3.

Note: It is always a good practice reversing the changes back to their default settings, once you have made the necessary changes.

Next import the modified FTDIUSB file. Select Import and choose the modified registry file to import the registry file. This is shown in the following figure:

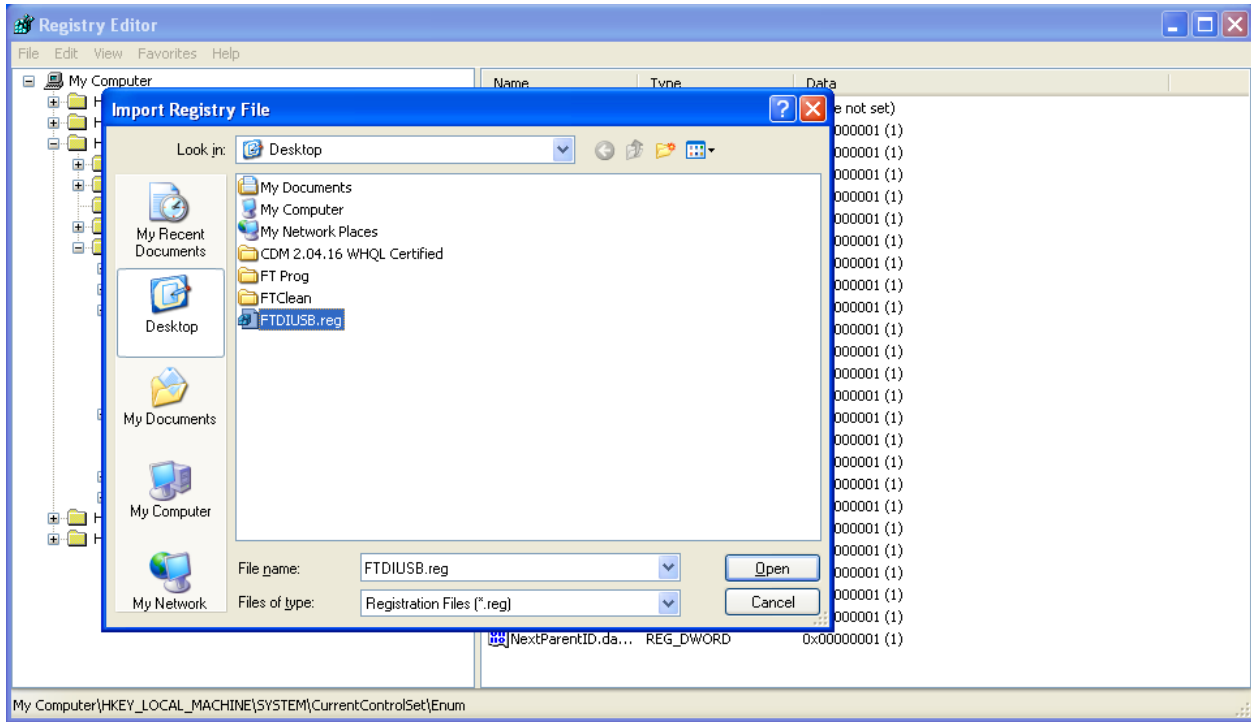


Figure 12 - Importing the FTDIUSB File to the Registry

To check that the procedure has worked, open the device manager and press “Scan for hardware changes”. This should show the new COM port assignments as illustrated in the following figure:

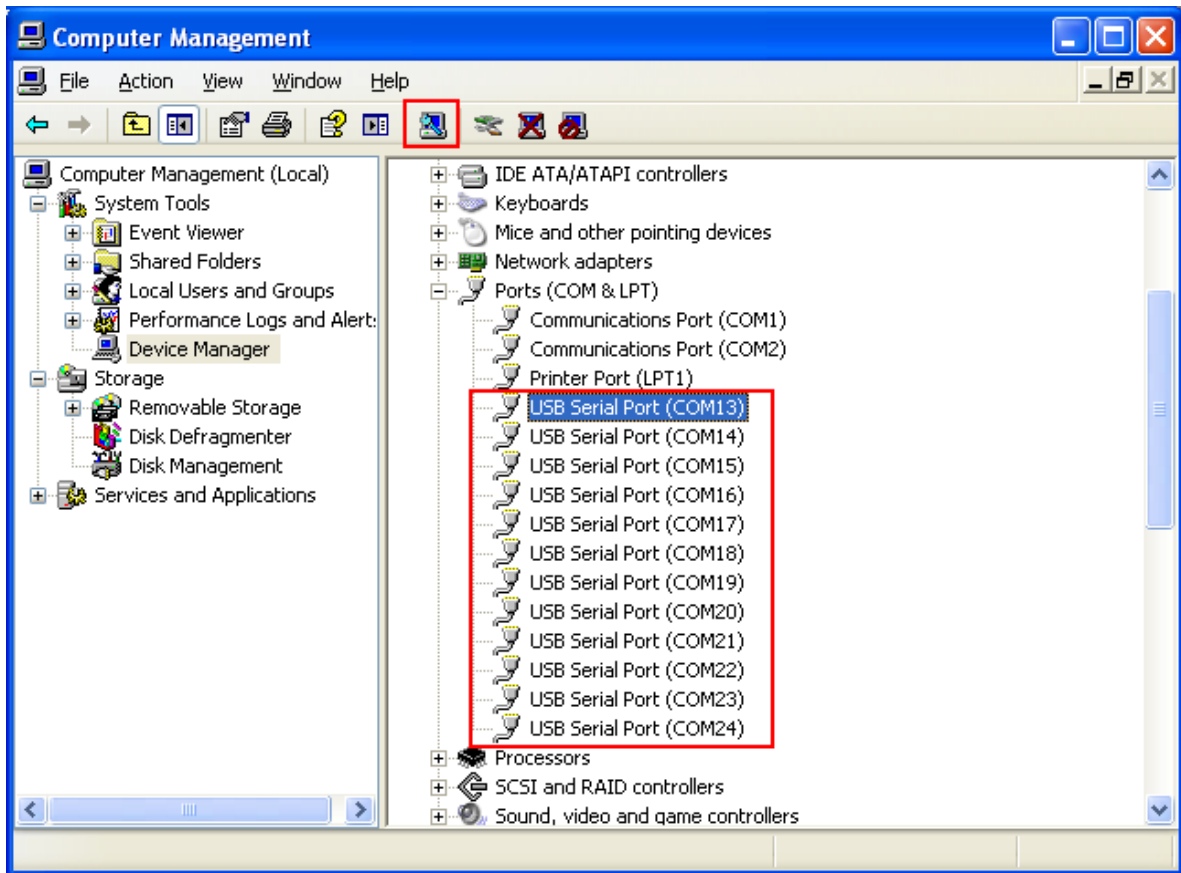


Figure 13 - Device Manager Re-Assigned COM Port Numbers

4 Contact Information

Head Office – Glasgow, UK

Future Technology Devices International Limited
Unit 1, 2 Seaward Place, Centurion Business Park
Glasgow G41 1HH
United Kingdom
Tel: +44 (0) 141 429 2777
Fax: +44 (0) 141 429 2758

E-mail (Sales) sales1@ftdichip.com
E-mail (Support) support1@ftdichip.com
E-mail (General Enquiries) admin1@ftdichip.com

Branch Office – Tigard, Oregon, USA

Future Technology Devices International Limited (USA)
7130 SW Fir Loop
Tigard, OR 97223-8160
USA
Tel: +1 (503) 547 0988
Fax: +1 (503) 547 0987

E-mail (Sales) us.sales@ftdichip.com
E-mail (Support) us.support@ftdichip.com
E-mail (General Enquiries) us.admin@ftdichip.com

Branch Office – Taipei, Taiwan

Future Technology Devices International Limited (Taiwan)
2F, No. 516, Sec. 1, NeiHu Road
Taipei 114
Taiwan, R.O.C.
Tel: +886 (0) 2 8791 3570
Fax: +886 (0) 2 8791 3576

E-mail (Sales) tw.sales1@ftdichip.com
E-mail (Support) tw.support1@ftdichip.com
E-mail (General Enquiries) tw.admin1@ftdichip.com

Branch Office – Shanghai, China

Future Technology Devices International Limited (China)
Room 1103, No. 666 West Huaihai Road,
Shanghai, 200052
China
Tel: +86 21 62351596
Fax: +86 21 62351595

E-mail (Sales) cn.sales@ftdichip.com
E-mail (Support) cn.support@ftdichip.com
E-mail (General Enquiries) cn.admin@ftdichip.com

Web Site

<http://ftdichip.com>

Distributor and Sales Representatives

Please visit the Sales Network page of the [FTDI Web site](#) for the contact details of our distributor(s) and sales representative(s) in your country.

System and equipment manufacturers and designers are responsible to ensure that their systems, and any Future Technology Devices International Ltd (FTDI) devices incorporated in their systems, meet all applicable safety, regulatory and system-level performance requirements. All application-related information in this document (including application descriptions, suggested FTDI devices and other materials) is provided for reference only. While FTDI has taken care to assure it is accurate, this information is subject to customer confirmation, and FTDI disclaims all liability for system designs and for any applications assistance provided by FTDI. Use of FTDI devices in life support and/or safety applications is entirely at the user's risk, and the user agrees to defend, indemnify and hold harmless FTDI from any and all damages, claims, suits or expense resulting from such use. This document is subject to change without notice. No freedom to use patents or other intellectual property rights is implied by the publication of this document. Neither the whole nor any part of the information contained in, or the product described in this document, may be adapted or reproduced in any material or electronic form without the prior written consent of the copyright holder. Future Technology Devices International Ltd, Unit 1, 2 Seaward Place, Centurion Business Park, Glasgow G41 1HH, United Kingdom. Scotland Registered Company Number: SC136640

Appendix A - References

Acronyms and Abbreviations

Terms	Description
COM	Communication Port
OS	Operating System
PC	Personal Computer
USB	Universal Serial Bus

Appendix B – List of Tables & Figures

List of Figures

Figure 1 - System COM Port Assignment.....	3
Figure 2 - Accessing the Registry (Windows XP).....	4
Figure 3 - Accessing the Registry (Windows 7).....	5
Figure 4 - Export the FTDIBUS Registry to a File.....	5
Figure 5 - Edit the Registry File	6
Figure 6 - Modifying the FTDIUSB.reg Registry File	6
Figure 7 - Editing the ComDB Database	8
Figure 8 - Change the Value 3	8
Figure 9 - Modifying Registry Permissions for FTDIUSB Folder.....	9
Figure 10 - Allow Full Control Access Rights to the FTDIUSB Registry.....	10
Figure 11 - "Access Denied" Message Window.....	10
Figure 12 - Importing the FTDIUSB File to the Registry.....	11
Figure 13 - Device Manager Re-Assigned COM Port Numbers	12

Appendix C - Revision History

Document Title: AN_132 Re-Assigning COM Port Numbers Using the Windows Registry
Document Reference No.: FT_000196
Clearance No.: FTDI# 121
Product Page: <http://www.ftdichip.com/FTPProducts.htm>
Document Feedback: [Send Feedback](#)

Revision	Changes	Date
1.0	Initial release	2009-11-06
1.1	Update to include Windows 7 onwards	2016-04-27