

# FLEX STACK

FW-12-05-G-D-530-101

FW-20-05-F-D-610-065

(1.27 mm) .050"

FW-SM SERIES

# SMT MICRO BOARD STACKER

## SPECIFICATIONS

For complete specifications and recommended PCB layouts see [www.samtec.com?FW-SM](http://www.samtec.com?FW-SM)

**Insulator Material:**  
Black Liquid Crystal Polymer  
**Terminal Material:**  
Phosphor Bronze  
**Plating:**  
Sn or Au over 50 μ" (1.27 μm) Ni  
**Operating Temp Range:**  
-55 °C to +125 °C  
**RoHS Compliant:**  
Yes

## PROCESSING

**Lead-Free Solderable:**  
Yes  
**SMT Lead Coplanarity:**  
(0.10 mm) .004" max (02-30)  
(0.15 mm) .006" max (31-50)\*  
\*(.004" stencil solution may be available; contact IPG@samtec.com)

## RECOGNITIONS

For complete scope of recognitions see [www.samtec.com/quality](http://www.samtec.com/quality)



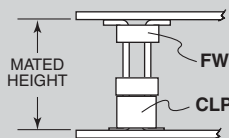
## ALSO AVAILABLE (MOQ Required)

- Smaller stack heights

**Board Mates:**  
CLP, FLE

**Cable Mates:**  
FFSD

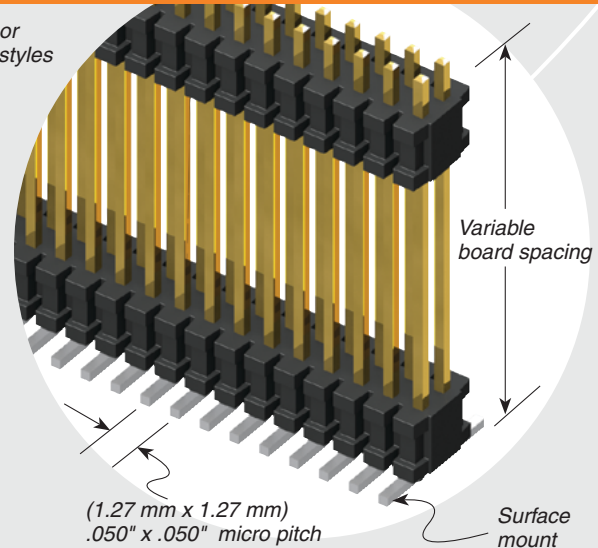
## APPLICATIONS



| LEAD STYLE           |     | MATED HEIGHT* |
|----------------------|-----|---------------|
| FW                   | CLP |               |
| FW-XX-03-X-X-233-065 | -02 | (8.13) .320   |
| FW-XX-03-X-X-303-065 |     | (9.91) .390   |

\*Processing conditions will affect mated height.

Low-profile or skyscraper styles



| FW | NO. PINS PER ROW | LEAD STYLE                    | PLATING OPTION  | D | STACKER HEIGHT  | POST HEIGHT  | OPTION   |
|----|------------------|-------------------------------|---|---|---|--|--|
|    | 02 thru 50       | Specify LEAD STYLE from chart | <p><b>-F</b><br/>= Gold flash on post, Matte Tin on tail</p> <p><b>-L</b><br/>= 10 μ" (0.25 μm) Gold on post, Matte Tin on tail</p> <p><b>-G</b><br/>= 10 μ" (0.25 μm) Gold on post, Gold flash on tail</p> |   | <p><b>-“XXX”</b><br/>= Stacker Height (in inches)<br/>Example:<br/>-250 = (6.35 mm) .250"</p> | <p><b>-“XXX”</b><br/>= Post Height (in inches)<br/>(1.65 mm) .065" minimum<br/>Example:<br/>-065 = (1.65 mm) .065"</p> | <p><b>-ES</b><br/>= End Shroud (-075 post height only. Mate only with CLP) (5.46 mm) .215" to (15.49 mm) .610" stacker height only 9 pins/row min.</p> <p><b>-EP</b><br/>= End Shroud with Guide Post (-075 post height only. Mate only with CLP.) (5.46 mm) .215" to (15.49 mm) .610" stacker height only 9 pins/row min.</p> <p><b>-A</b><br/>= Alignment Pin (3 positions min.) (5.46 mm) .215" to (15.75 mm) .620" stacker height only</p> <p><b>-P</b><br/>= Pick &amp; Place Pad (5 positions min.)</p> <p><b>-TR</b><br/>= Tape &amp; Reel (Max overall height = Post+Stacker Height+ Pad+Alignment Pin = .700 (17.78))</p> |

| LEAD STYLE | STACKER HEIGHT                 | STACKER HEIGHT                  |
|------------|--------------------------------|---------------------------------|
| <b>-03</b> | (5.46) to (8.51) .215 to .335  | (7.11) to (10.16) .280 to .400  |
| <b>-05</b> | (8.64) to (15.49) .340 to .610 | (10.29) to (17.15) .405 to .675 |

**Notes:**  
For added mechanical stability, Samtec recommends mechanical board spacers be used in applications with gold or selective gold plated connectors. Contact ipg@samtec.com for more information.

This Series is non-standard, non-returnable.

Due to technical progress, all designs, specifications and components are subject to change without notice.

[WWW.SAMTEC.COM](http://WWW.SAMTEC.COM)

All parts within this catalog are built to Samtec's specifications. Customer specific requirements must be approved by Samtec and identified in a Samtec customer-specific drawing to apply.